



HD Radio Antenna Installation Instructions

Safety notices.

- Read the entire installation instructions prior to installation of the product. If you don't feel comfortable with the installation contact a qualified Car Stereo/12 Volt specialist for the installation.
- To ensure no interference is caused, antenna cables must be laid at a sufficient distance from existing cable harnesses. Use cable grommets (not included) to protect cables against sharp edged holes.
- You must observe the vehicle manufacture's safety notices (airbags, alarm systems, trip computers, immobilizers) during installation.
- This module is designed for inside application only and may stop working if exposed to water.

Before starting the installation check:

- Space available (see illustration no. 3)
- Routing of antenna cable (see illustration no. 8 and 9)
- Availability of a Vehicle Body Ground (see sketch no. 1)

For complete content of the product package:

- 1 x Antenna module (with pre-mounted screw)
- 1 x Mounting base
- 1 x Mounting base installation template (part of box)
- 1 x Reception element
- 1 x 2.5 mm Ground Screw
- 1 x Star Washer
- 1 x Alcohol wipe

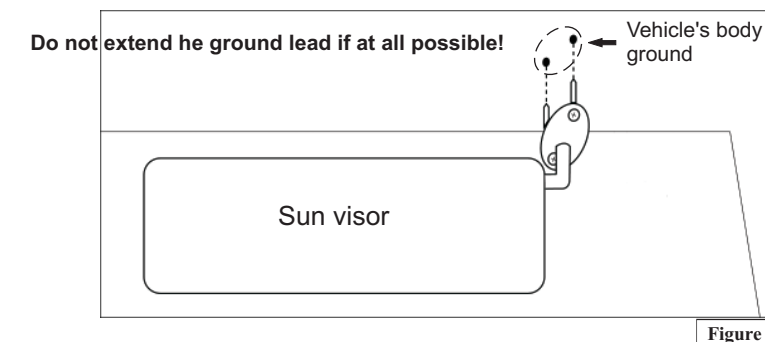
Other needed materials and tools:

- Household adhesive tape
- Philips screw driver with tip size P1
- Tape measure

Getting started - Locating a suitable ground point.

STEP 1: Remove the passenger side sun visor.

STEP 1.1: An ideal ground point is located under the screw. Scratch the paint around the sun visor-mounting hole with a sharp object to ensure that the ground strap can get a good electrical contact to the vehicle body metal.



Requirements for Proper Adhesion.

- During installation, the inner side of the front window as well as all elements to be adhered to the front window must have a minimum temperature of 64 Fahrenheit (18 Celsius) in a low humidity environment. We recommend the installation in a heated garage or similar if the ambient temperature is too low and or the humidity is too high.
- Ensure that the front window is absolutely dry on the inside where the antenna will be installed!

Important!

Do not touch the adhesive surfaces of the reception element carrier film and/or the mounting base after peeling off the protective foil, to avoid degradation of adhesion!

Assembling of reception element and antenna

STEP 2: Take the mounting base and hook the ring found on the end of the reception element to the screw pin located on the mounting base, adhesive side down. Place the antenna module on the lower pin of the mounting base, then snap the module on to the base. Fasten the module to the base by tightening the pre-mounted screw. Do not use a powered screwdriver to avoid stripping the thread!

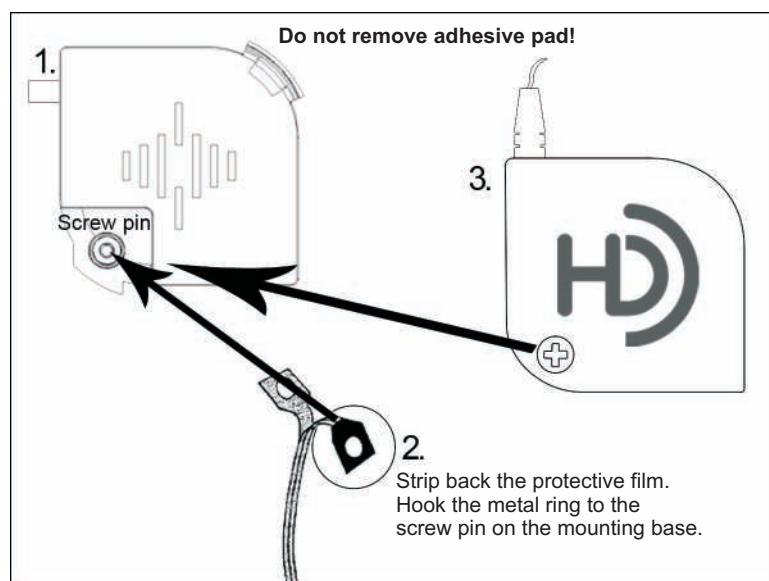


Figure 2

Vertical installation of the HD Radio Antenna

STEP 3: If needed, use a commercial window cleaner to remove dirt and grease from the inside of the windshield. Then use the alcohol wipe included in the package to clean the installation area for the antenna and reception element (see figure no. 3) approx. 4 inches / 100 mm from the A-pillar starting from the top of the front window down approx. 24 inches / 600 mm to the dash board).

NOTE: Horizontal installation of the antenna is also possible. (See figure 8 and 9.)

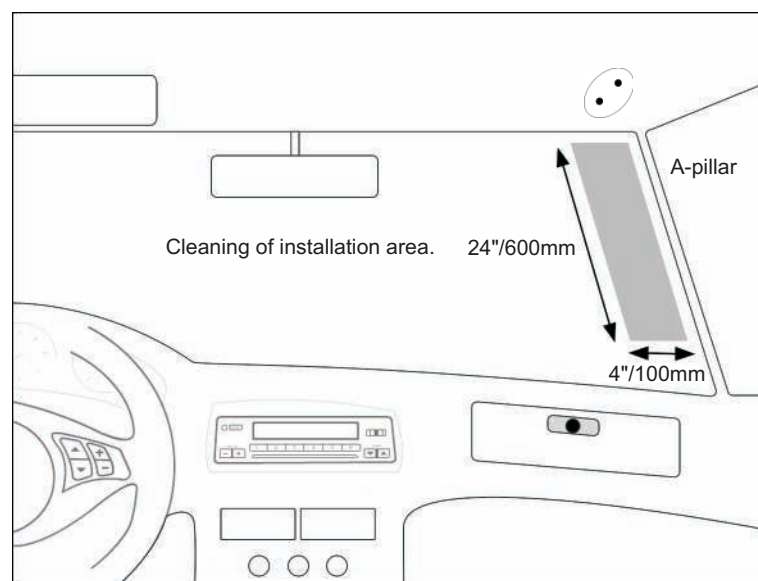


Figure 3

Positioning the mounting template

STEP 4: Position mounting base installation template on the passenger side corner of the front window. Push the template up until it touches the roof underneath the headliner and then push it right until it touches the metal A-pillar frame. (see figure no.4) To keep the template in place you may use clear scotch tape. This template is designed to aid in optional placement of the antenna. Placement of the antenna closer to the A-pillar or the roof will degrade reception.

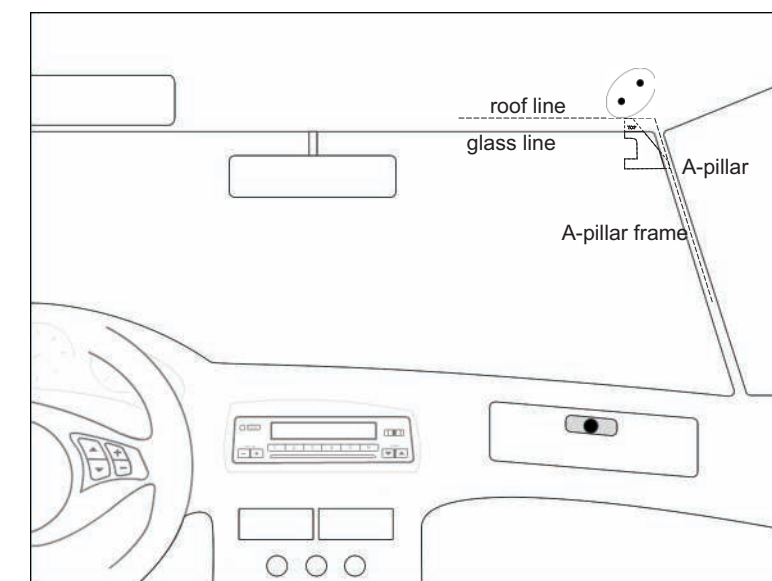


Figure 4

Mounting the HD Radio Antenna

STEP 5 - Peel off protective adhesive backing from mounting base. Position the antenna into the installation template adhered to the window with the screw pin positioned to the lower left side. Press the pre-assembled antenna module against the front window with gentle force. Hold it to the window for about 30 seconds.

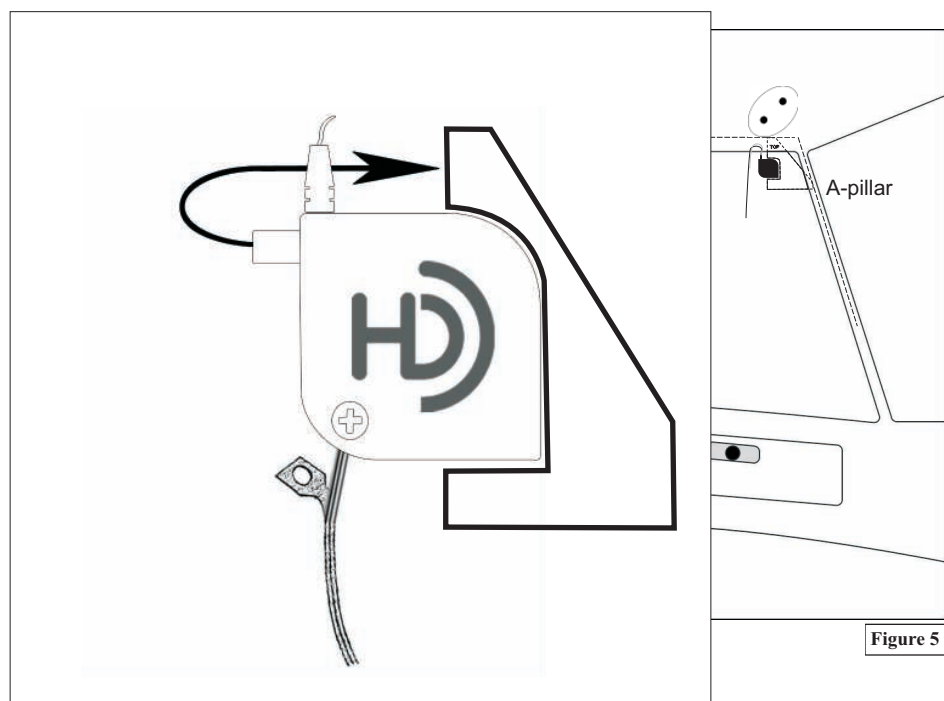


Figure 5

STEP 6: Remove the installation template.

STEP 7: Peel off the protective foil from the reception element by about 2 inches / 50 mm at a time.

NOTE: Please note, if your front window is less than 600 mm in height, the reception element will need to be shortened. The element should be kept about 1inch/25 mm away from the bottom of the windshield.

STEP 7.1: After peeling away protective foil approximately 1 inch / 25 mm from the pin, stick this portion to the glass.

STEP 7.2: Stretch the reception element down parallel to the a-pillar (see figure no.6). Peel the protective foil back from top to bottom. Hold the reception element in position with one hand and use your other hand to press softly the reception element to the glass starting from the mounting base making sure there are no kinks.

STEP 7.3: Continue applying the reception element all the way down to the end by peeling the protective foil off and aligning the reception element adhesive backing.

NOTE: The reception element should not be placed horizontally under the factory tinted window area because in general such may contain reflective metal to keep the radiation out that interferes with reception.

STEP 7.4: Gently press the reception element against the front window.

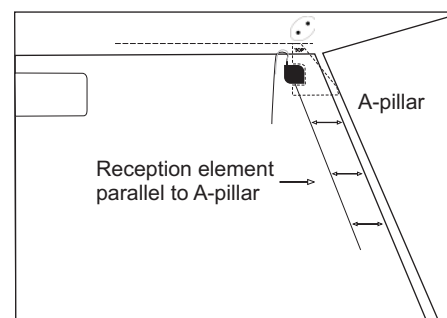
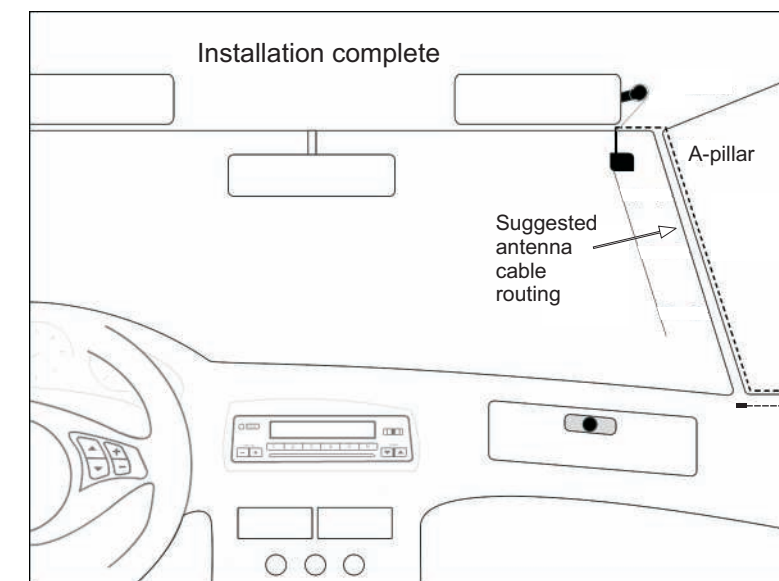


Figure 6

STEP 8: Unroll the antenna cable and push it under the headliner and A-pillar around the front window and lead it down toward the dashboard (see figure no. 7). Route the antenna cable towards mounting location of HD Radio receiver.

STEP 9: Slide the ground strap under the headliner to the mounting base of the visor. It may be necessary to uninstall the A-Pillar cover to allow the headliner to move. Reinstall the sun visor with the ground strap touching the exposed metal and hold the ground strap in place with the visor mounting screw. Preferably the visor mounting screw goes through the braided ground strap. Ensure that the sun visor is properly re-installed.



TIP: Use an multimeter to verify that the braid makes the proper ground connection.

Figure 7

Horizontal installation of the HD Radio Antenna

Horizontal placement of the antenna is possible, however you may experience decreased reception performance when compared to a vertical placement. Assemble the antenna and if needed, use a commercial window cleaner to remove dirt and grease from the inside of the windshield. Then use the alcohol wipe included in the package to clean the installation area for the antenna and reception element.

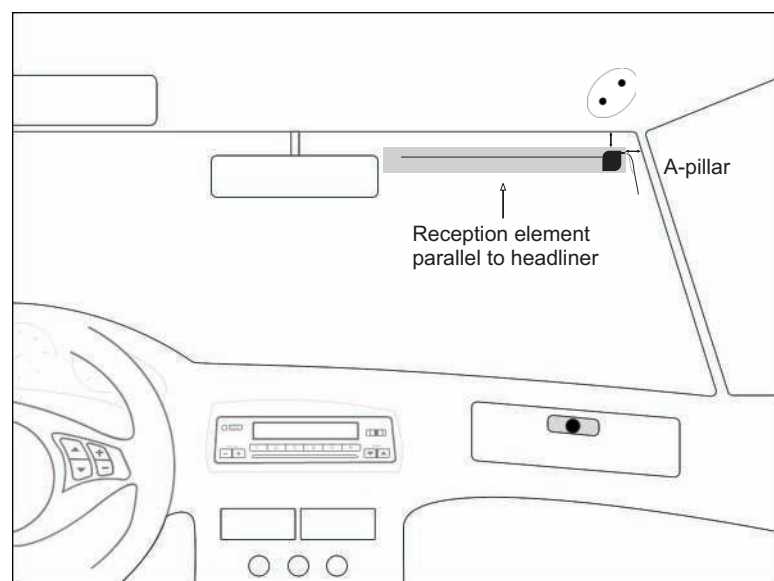


Figure 8

Mount the antenna on the windshield, stick the reception element to the glass parallel to the headliner. Push the antenna cable under the headliner and A-pillar around the front window making sure not to obstruct the airbag. Then route the cable down toward the dashboard. Always keep the antenna element at least 1" away from the roof.

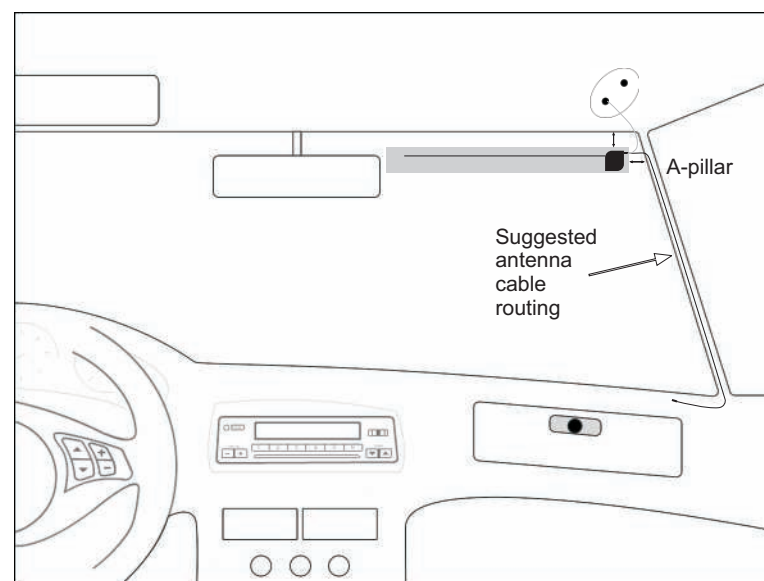


Figure 9

About the antenna

This antenna was designed for the HD DICE HD Radio interface. The use of this antenna with other devices is not supported.

Reception performance of this antenna may be effected by the geographical topology, and the distance of radio broadcast stations.

This antenna is only warranted in conjunction with the HD DICE receiver. No separate warranty, expressed or implied applies.

Specifications

Impedance: 75 ohm
Power: 10V DC (max)

WARNING

DAMAGE TO THE COAXIAL CABLE WHILE THE ANTENNA IS POWERED FROM THE HD-DICE MAY CAUSE PERMANENT DAMAGE TO BOTH THE ANTENNA AND THE RECEIVER UNIT !

Enjoy HD Radio with HD DICE!
HD DICE - Sound travel to the future

